

Expand Current Range for Use with the 50 mV Full Scale Meter (50/60 Hz, 0.5 % class)

EXTERNAL SHUNT HS-1 series



Not CE Marked

- Expand current range for the Meter Relay, or a switchboard meter
- Combination use with the 50 mV meter

Basic specifications

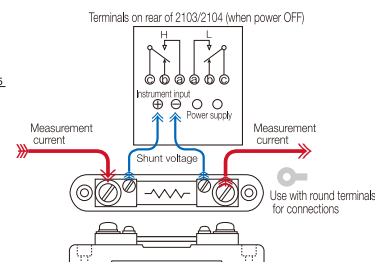
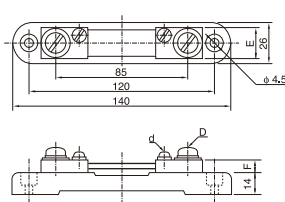
Model	Rated current	Class
HS-1-30	30 A	±0.5 % at 80 % of rated current 60 °C or less around temperature
HS-1-50	50 A	
HS-1-75	75 A	
HS-1-100	100 A	
HS-1-150	150 A	
HS-1-200	200 A	±0.5 % at 0 A to 200 A ±1.0 % at 200 A to 240 A 60 °C or less around temperature
HS-1-300	300 A	

The total resistance of the connection cord must be 0.1 Ω or less

Model No. (Order Code)	HS-1-30	(30 A, class 0.5%)
	HS-1-50	(50 A, class 0.5%)
	HS-1-75	(75 A, class 0.5%)
	HS-1-100	(100 A, class 0.5%)
	HS-1-150	(150 A, class 0.5%)
	HS-1-200	(200 A, class 0.5%)
	HS-1-300	(300 A, class 1.0%)

Note: These products are built-to-order so please confirm specifications and delivery time with your local HIOKI distributor.

Dimensions and connecting diagrams



* Please note that connections' cores are not included. The total resistance of all shunt devices used should not exceed 0.1 Ω

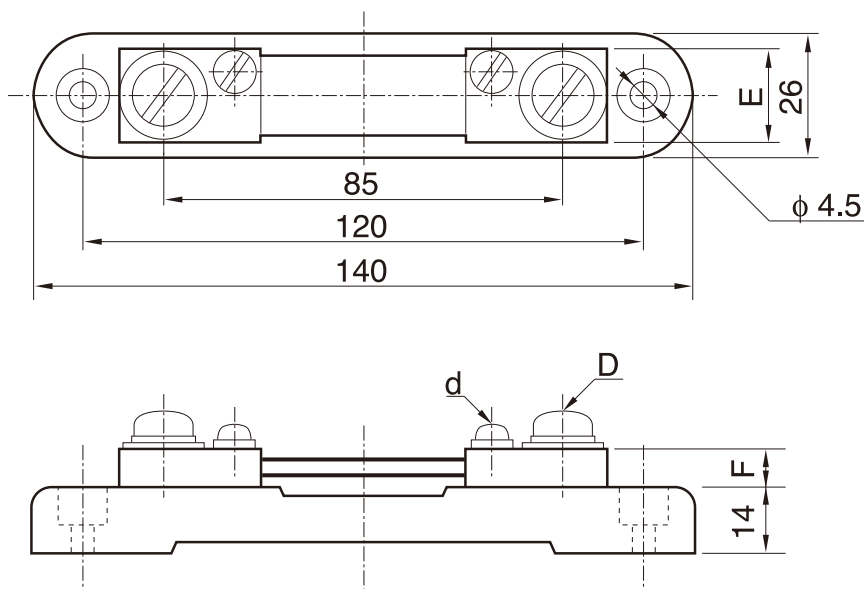
* If product includes an instrument number or is packaged with an instrument, use in combination with that instrument

* Select a model such that input does not exceed 80 % of the rating. (0.5 accuracy definition requirements: 80 % or less of rated input, ambient temperature of 60 °C or less)

Dimensions table

Symbol	E	F	d	D
HS-1-30	20 mm (0.79 in)	6 mm (0.24 in)	M4 mm	M5 mm
HS-1-50	20 mm (0.79 in)	8 mm (0.31 in)	M4 mm	M8 mm
HS-1-75	20 mm (0.79 in)	8 mm (0.31 in)	M4 mm	M8 mm
HS-1-100	20 mm (0.79 in)	15 mm (0.59 in)	M5 mm	M8 mm
HS-1-150	20 mm (0.79 in)	15 mm (0.59 in)	M5 mm	M8 mm
HS-1-200	25 mm (0.98 in)	15 mm (0.59 in)	M5 mm	M10 mm
HS-1-300	25 mm (0.98 in)	15 mm (0.59 in)	M5 mm	M10 mm

Dimensions (Expand)



Dimensions table

Symbol	E	F	d	D
HS-1-30	20 mm (0.79 in)	6 mm (0.24 in)	M4 mm	M5 mm
HS-1-50	20 mm (0.79 in)	8 mm (0.31 in)	M4 mm	M8 mm
HS-1-75	20 mm (0.79 in)	8 mm (0.31 in)	M4 mm	M8 mm
HS-1-100	20 mm (0.79 in)	15 mm (0.59 in)	M5 mm	M8 mm
HS-1-150	20 mm (0.79 in)	15 mm (0.59 in)	M5 mm	M8 mm
HS-1-200	25 mm (0.98 in)	15 mm (0.59 in)	M5 mm	M10 mm
HS-1-300	25 mm (0.98 in)	15 mm (0.59 in)	M5 mm	M10 mm